



Foothill Gold Line

August 2020 Project Update

Construction Authority Begins Major Construction

Late last month, the Foothill Gold Line Construction Authority (Construction Authority) began major construction on the 9.1-mile, four-station Foothill Gold Line light rail project from Glendora to Pomona. The project is anticipated to be completed in 2025 and will add new Metro Gold Line (currently known as the L Line) stations in the cities of Glendora, San Dimas, La Verne and Pomona. If additional funding is secured by October 2021, the entire 12.3-mile project from Glendora to Montclair will be completed altogether by 2028, adding additional stations in Claremont and Montclair. The major construction work is being carried out by the Joint Venture design-build team of Kiewit-Parsons (KPJV).



The Foothill Gold Line from Glendora to Pomona is being built within an existing rail corridor that is shared with BNSF freight service. Over the next five years, crews will relocate within the shared rail corridor more than nine miles of freight track; install two sets of light rail tracks; build four new light rail stations with unique artwork created by city-selected station artists; rebuild 21 at-grade street crossings where trains will cross at street level; build or renovate 19 bridge structures; relocate underground utilities; install new communications systems; and install nine traction power supply substations, along with an overhead catenary system, to power the electric light rail trains.

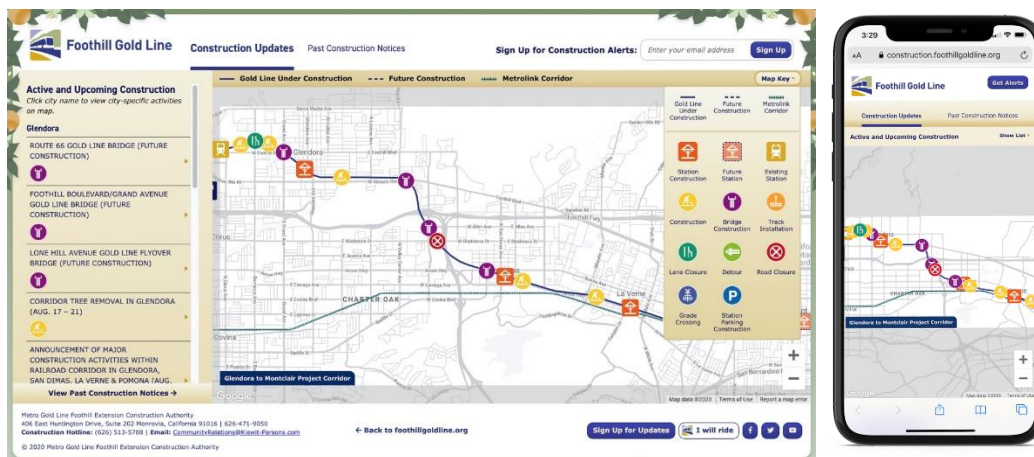
The first major construction activity, which was started in mid-July, was the reconstruction of the Gladstone Street grade crossing in San Dimas. In the last several weeks, KPJV has made significant progress. Crews first demolished the curbs, gutters, medians, roadways and sidewalks on both sides of the railroad crossing, while maintaining access to the freight track for their continued service. As seen in the pictures above, crews are now protecting and relocating underground utilities, including storm drains and water, sewer, gas and communications lines - before moving on to the next stage of work.

Over the next six months, the project team will be actively working throughout the 9.1-mile project corridor from Glendora to Pomona. Here is a list of some of the major activities planned to start in the coming months:

- Grade Crossing Improvements (each requiring long-term full street closures):
 - Glendora Avenue (Glendora). 5-month closure beginning August 21.
 - Barranca Avenue (Glendora). 4 ½-month closure beginning August 25.
 - Wheeler Avenue (La Verne). Anticipated to begin October 13.
 - A Street (La Verne), Fulton Avenue (Pomona) and Eucla Avenue (San Dimas). All anticipated to begin in late December.

- Brush Clearing and Tree Removal throughout Corridor
- Mid-block grading, drainage and utilities activities throughout Corridor
- Relocation of Seven Freight Bridge Structures (Little Dalton Wash, Big Dalton Wash, San Dimas Wash, Puddingstone Channel, Marshall Creek, Live Oak and Thompson Creek)
- Project Design Continues
- Rail Delivery Train (first of three)

Interactive Construction Map Webpage Now Available – This month the Construction Authority launched a new interactive construction map page on the agency website – foothillgoldline.org. The new webpage is a one-stop destination for all of the project’s construction-related information; keeping residents, businesses and interested stakeholders updated on where construction is active and areas to avoid due to long-term street closures. Developed by Pasadena-based [Mackey Creative Lab](http://MackeyCreativeLab.com), the website features a responsive design that adapts the layout for mobile, tablet and desktop users; ensuring an optimized viewing experience across all devices.



The new interactive map page provides project stakeholders:

- Easy viewing of current and upcoming major construction activities, including access to all current and archived construction notices
- Information on what to expect during the construction activities, such as street or lane closures, detours for motorists and pedestrians, and how to stay safe around active construction
- Contact information for staff to answer questions about construction or to provide general project-related information
- Viewing of renderings, site plans, locations and information about the future Gold Line stations and major bridges
- A link to sign up to receive Construction Alert emails

Have Questions about the Foothill Gold Line?

Questions about Construction - For questions regarding project construction, please call/text the new Foothill Gold Line Construction Hotline at (626) 513-5788 or email communityrelations@Kiewit-Parsons.com.

Questions regarding the Foothill Gold Line Project – For general project questions, please call/email the Construction Authority - Yesenia Arias at (626) 305-7012, yarias@foothillgoldline.org

It is easy to stay updated on the Foothill Gold Line. Sign up to receive construction alerts and E-News Updates on the project at - www.foothillgoldline.org.